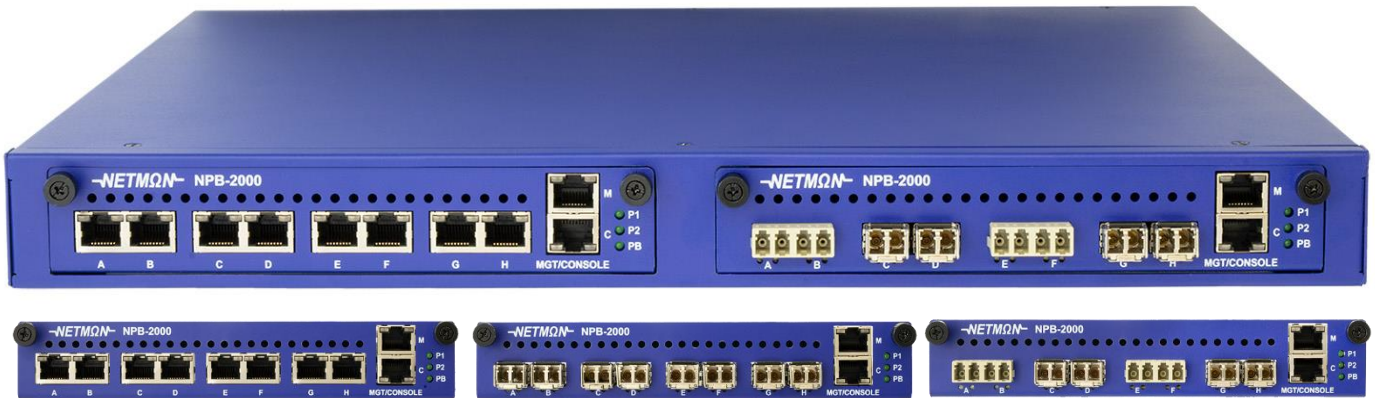


Netmon NPB2000

Netmon NPB2000 System is the Network NPB System with the NPB function for network packet monitoring and the filtering function based on the L2 ~ L4 headers of packet as well, and is the system which provides the optimal solution.

Netmon NPB2000 provides the 100% of packet monitoring with the function of split & aggregation NPB and provides the filtering on L2~L4 packets such as Src-IP, Dst-IP, MAC, TCP-port and UDP-port, etc. **Netmon NPB2000** provides the 4 ports for network with SX/LX/Copper types and 6 ports for monitoring, and can be interconnected with various monitoring systems.

Netmon NPB2000 can be interconnected with the system : Packet Analyzing Equipment, Network Monitoring & Diagnostic & Monitoring Equipment, VoIP Monitoring Equipment, Monitoring Equipment in need of Filtering. It offers three product models: **NPB2000-NPB** for improved visibility, **NPB2000-TAP** for TAP functionality, and **NPB2000-Bypass** for Bypass functionality, as well as Copper-type TTTT and Optic-type MMMM modules.



NPB2000-NPB Highlights

- Support for all the protocols
- Support for Single Port 10/100/1000 UTP NPB.
- Support for Network Line Bypass while Power Failure
- Support Packet Filtering : Src-IP / Dst-IP, Src-MAC / Dst-MAC, TCP / UDP Src/Dst port, User Defined Byte (UDB), IPv6
- Support CLI and Web GUI management
- Provide the 10 ports for Network and Monitoring per Module (Front 8 ports, Rear 2 ports)
- Support SNMP / SNMP Trap
- Support SNTP, SYSLOG, In/Out Traffic statistics
- Provide Ethernet Mgmt port and Serial console
- Provide Power Supply Redundancy
- Provide 1U Rackmount chassis

NPB2000-TAP Highlights

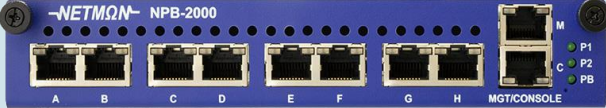
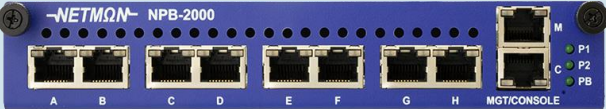
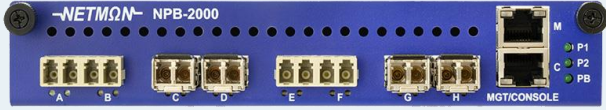
- Provide all functionality of NPB2000-NPB
- Support Packet Aggregation and Split TAP, M:N Packet Mirroring
- Support LFM(Link Fault Management)
- Zero Packet Loss when Power Off (Battery Optional)

NPB2000-Bypass Highlights

- Provide all functionality of NPB2000-NPB
- Support various Heartbeat Type (ARP, ICMP, Link)
- Support Inline, Active Bypass, Link Drop Mode
- Support link with multiple Appliance
- Support LFM(Link Fault Management)
- Support Failover within 20ms when Power Off (Battery Optional)

Netmon NPB2000

Ordering Information

Model	Part Number	Port & Interface		Option
NPB2000 NPB	 <p>NS-TTTT</p>	Network A,B	RJ45 interface	
		Monitor C,D	RJ45 interface	
		Network E,F	RJ45 interface	
		Monitor G,H	RJ45 interface	
	Monitor J,K	RJ45 interface		
	Network A,B	SFP interface		
	Monitor C,D	SFP interface		
	Network E,F	SFP interface		
NPB2000 TAP / Bypass	 <p>TAP : NT-TTTT / Bypass : NB-TTTT</p>	Network A,B	RJ45 interface	Multi mode, Single mode
		Monitor C,D	RJ45 interface	
		Network E,F	RJ45 interface	
		Monitor G,H	RJ45 interface	
	Monitor J,K	RJ45 interface		
	Network A,B	LC interface		
	Monitor C,D	SFP interface		
	Network E,F	LC interface		
	 <p>TAP : NT-MMMM / Bypass : NB-MMMM</p>	Monitor G,H	SFP interface	Multi mode, Single mode
		Monitor J,K	RJ45 interface	

Specification

Network Port Interface	LC or RJ45 UTP
Monitor Port Interface	SFP or RJ45 UTP
Power Input	2.0 A @12VDC
Operating Temperature	0 °C ~ 50 °C
Storage Temperature	-20 °C ~ 70 °C
Relative Humidity	10 ~ 90% , No condensing
Weight [g]	본체 : 1.725 kg / 모듈 : 0.730 kg
Dimension [W x D x H]	482.6 mm x 356.0 mm x 44.5 mm
Install Type	1U Rack mount